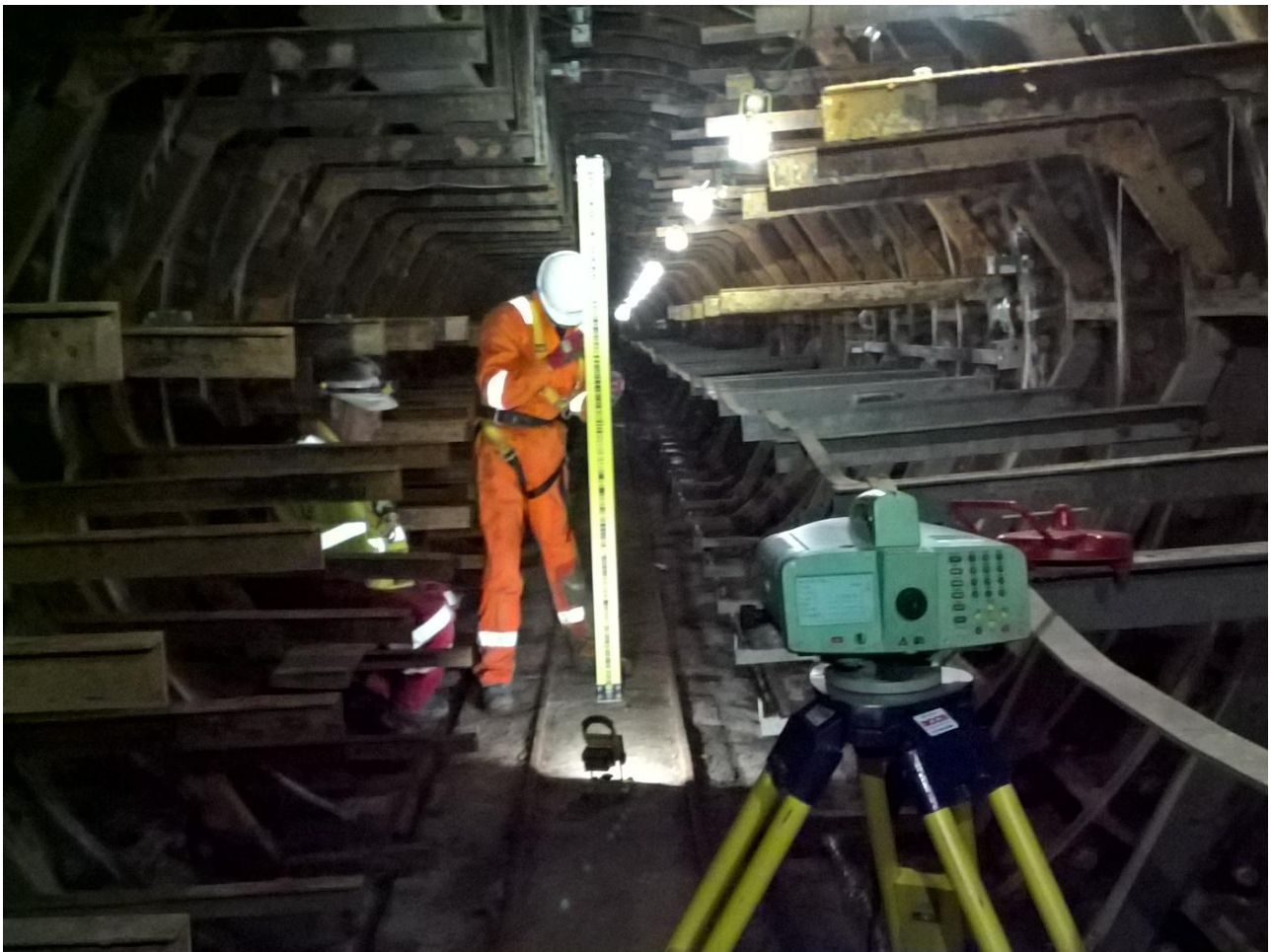


## Battersea Power Station

London

Battersea Power Station, which was fully decommissioned in 1983 and given Grade II building status, has undergone an £8bn redevelopment to provide shops, offices, luxury apartments and penthouses.



### The project

As part of the project, there was a requirement to monitor underground utility tunnels as work above ground progressed.

### The challenge

To provide a near real time monitoring system of underground utility tunnels under the constraints of stringent project criteria.

## The solution

The design and installation of a monitoring scheme consisting of wireless tilt meters and vibration sensors backed up with a manual survey every fortnight when access was granted. The automatic system provided data to engineers on a daily basis while the manual survey carried out every other week confirmed the overall settlement of the tunnels.

## Project facts

### Owner(s)

UK Power Networks

### Keller business unit(s)

GEO-Instruments

### Main contractor(s)

ABA

### Services

Noise, Vibration and Air Quality Monitoring  
Software/web-based data presentation  
Automated monitoring

### Markets

Building Monitoring  
Infrastructure Monitoring

### Technologies

Manual monitoring  
Tiltmeters  
Vibration and noise monitors

### Email address

[enquiries.uk@geo-instruments.co.uk](mailto:enquiries.uk@geo-instruments.co.uk)

### Phone number

+44 (0)207 709 2030