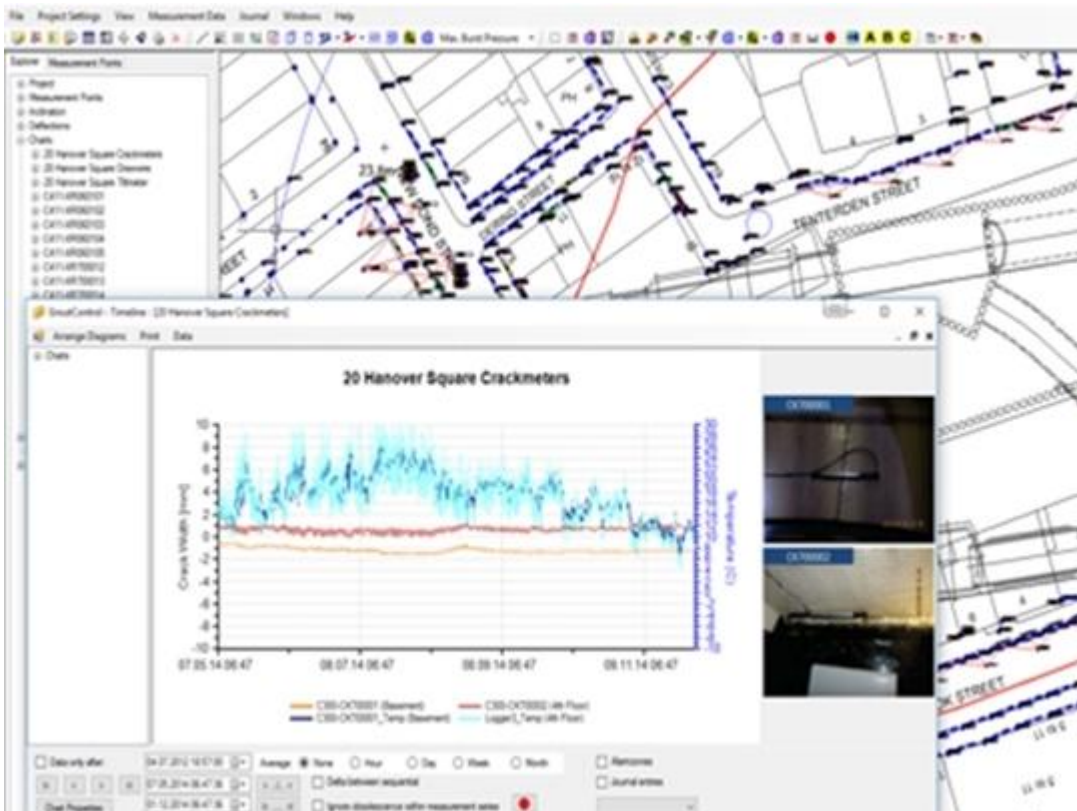


Crossrail C412 Bond Street fit out

London

GEO-Instruments inspected and maintained a wide range of instrumentation for a key Crossrail site.



The project

To take over instrumentation previously installed under another Crossrail contract and ensure that it was maintained and managed throughout the duration of excavation and fit out works at Bond Street Station's Eastern and Western Ticket Halls. As works progressed new in-ground instrumentation installations were also carried out on site.

The challenge

Ensuring that the instrumentation which was taken over would continue to function as expected over the course of the project, producing reliable data for the client. This data would then have to be displayed through a reliable medium which could be accessed from anywhere in the world and used for data review in daily meetings with stakeholders.

The solution

Automation of a number of instruments was carried out to remove the need for manual downloads, delivering not only live data but also a cost saving to the client. The data collected was then displayed across three platforms, gtcVisual, QuickView and IncloView, a specially designed app for displaying inclinometer data.

Project facts

Owner(s)

Crossrail

Keller business unit(s)

GEO-Instruments

Main contractor(s)

CSJV

Services

Software/web-based data presentation

Markets

Infrastructure Monitoring

Technologies

QuickView

Geotechnical instrumentation

Email address

enquiries.uk@geo-instruments.co.uk

Phone number

+44 (0)207 709 2030